



## Loading-/Unloading Storage System

Automatic stacking, storing, reclaiming and blending of bulk materials – highest storage volume in smallest space

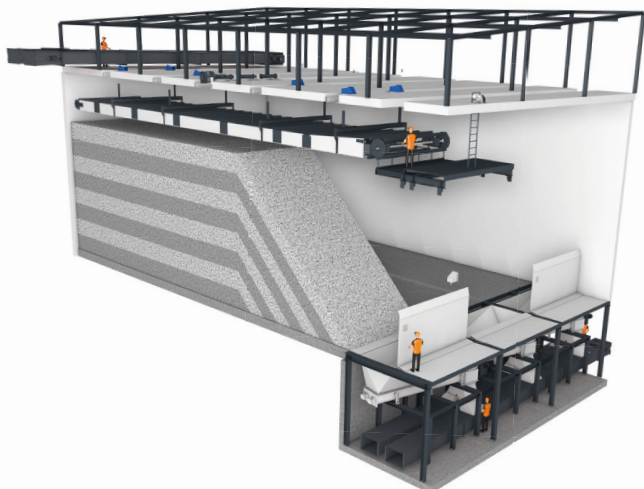




# Modular Storage System

with up to 1400 m<sup>3</sup> per segment  
and a small footprint

Difficult to handle materials like wood chips, wood shavings and solid alternative fuels with chip sizes up to approx. 100 mm can be handled in a very individual way.



Variety of feeding and discharge possibilities:

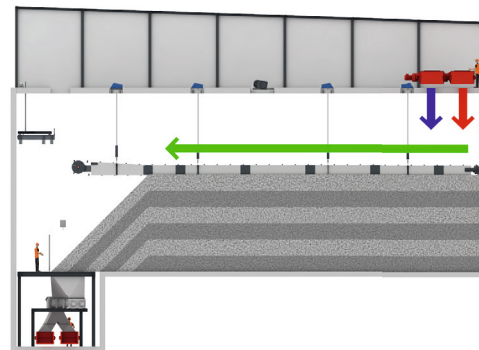
- Feeding of different qualities by two string conveying lines
- Material discharge to two transport lines (e.g. to calciner and main burner)

# Maximum flexibility in operation

The storage system arrangement with loading-/unloading conveyor offers maximum flexibility by three principle automatic operating modes.

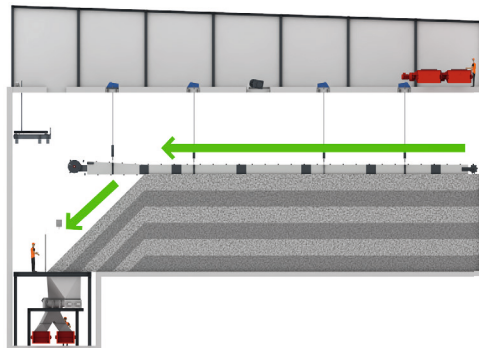
## Automatic feeding & storing

Material is fed via chain conveyor through opened slide gate at the top of the storage box and equally distributed by the loading-/unloading conveyor which follows automatically the material level in the storage box.



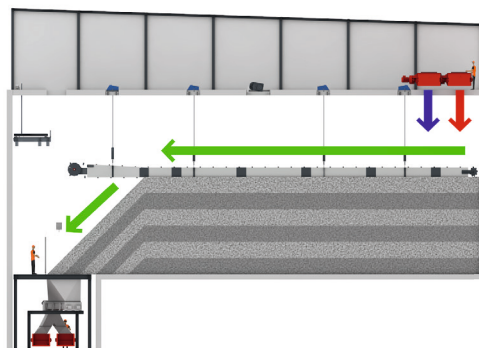
## Automatic controlled discharge

The loading/unloading conveyor moves the material to the front of the storage box until it is sliding down into the level controlled discharge hopper and discharges via the screw conveyor. The conveyor follows sensor controlled the material level in the storage box.



## Automatic feeding and controlled discharge

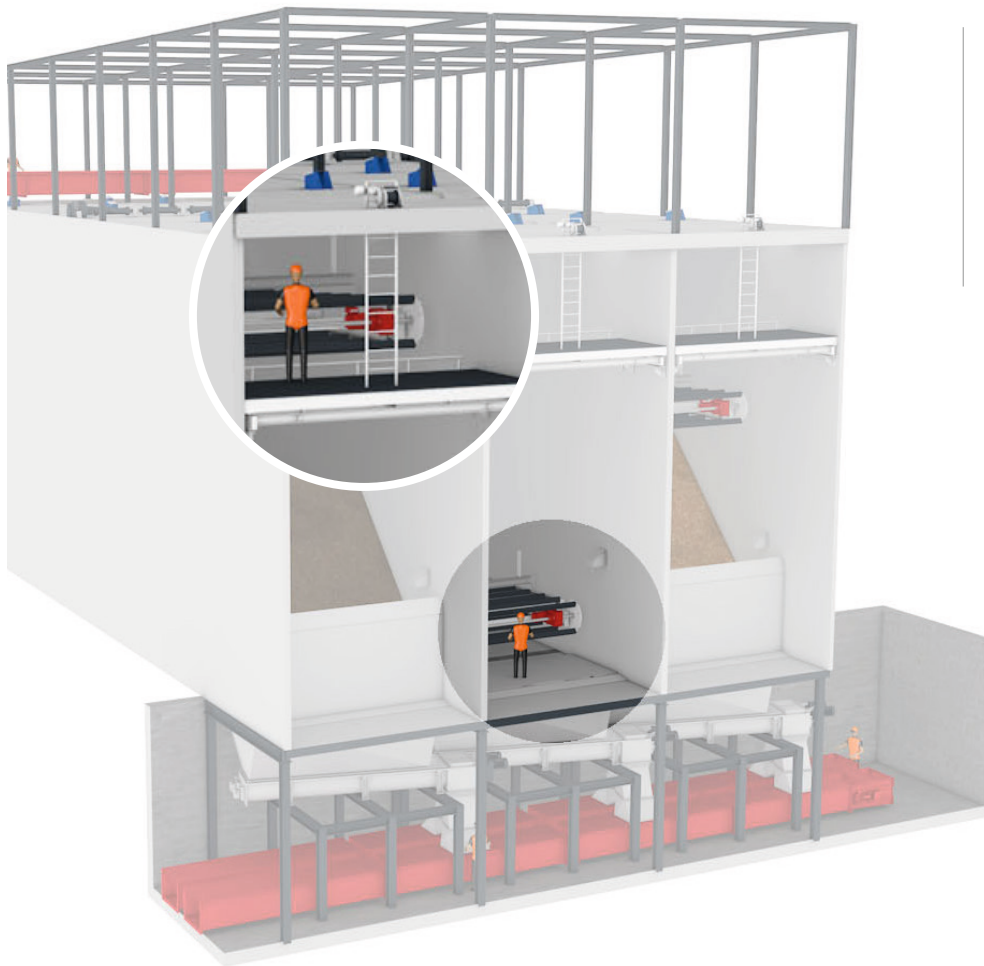
The loading-/unloading conveyor distributes the infeed material inside the box in such a way that material is not only distributed but also moved to the discharge hopper at the same time. The level control balances the material to the discharge hopper.



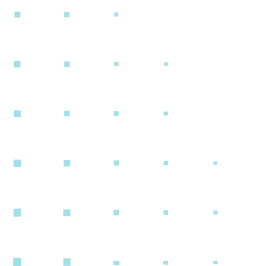


# Easy access and maintenance

Even the best design and arrangement needs inspection service and maintenance. The developed system layout and arrangement concept allows easy and full access for inspection and maintenance.



- Main and sensitive machine parts are located at the front end of the loading- / unloading conveyor or are accessible on top of storage box.
- Front end of loading- / unloading conveyor can be accessed via service platform in top position independent of material level.
- When box is empty it can be maintained direct from bottom access.

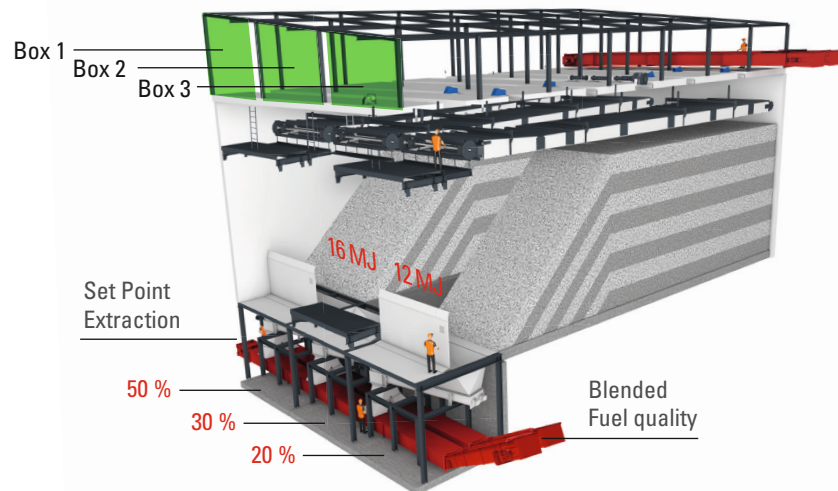




# Modular system for blending and/or feeding of two lines

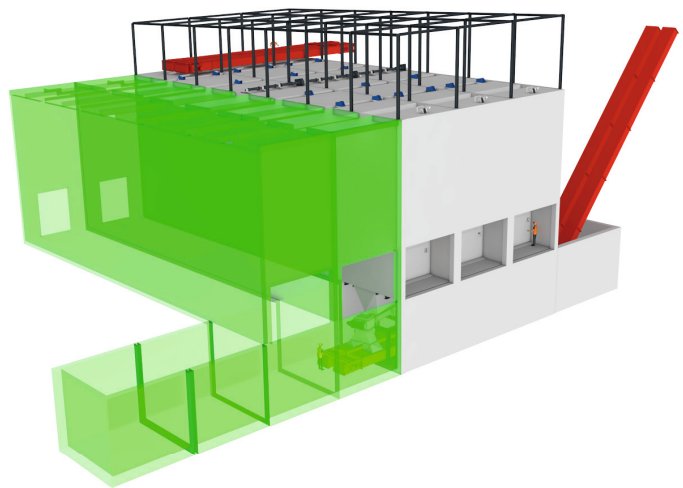
## Blending of different material qualities

By extracting an individual adjusted material stream out of two or more boxes a controlled blending and equalising of material quality can be established.



## Modular System

- Modular extension by adding new storage boxes (green)
- Split of different material qualities
- Two-way discharge (feeding to Main Burner and Calciner) with different fuel qualities





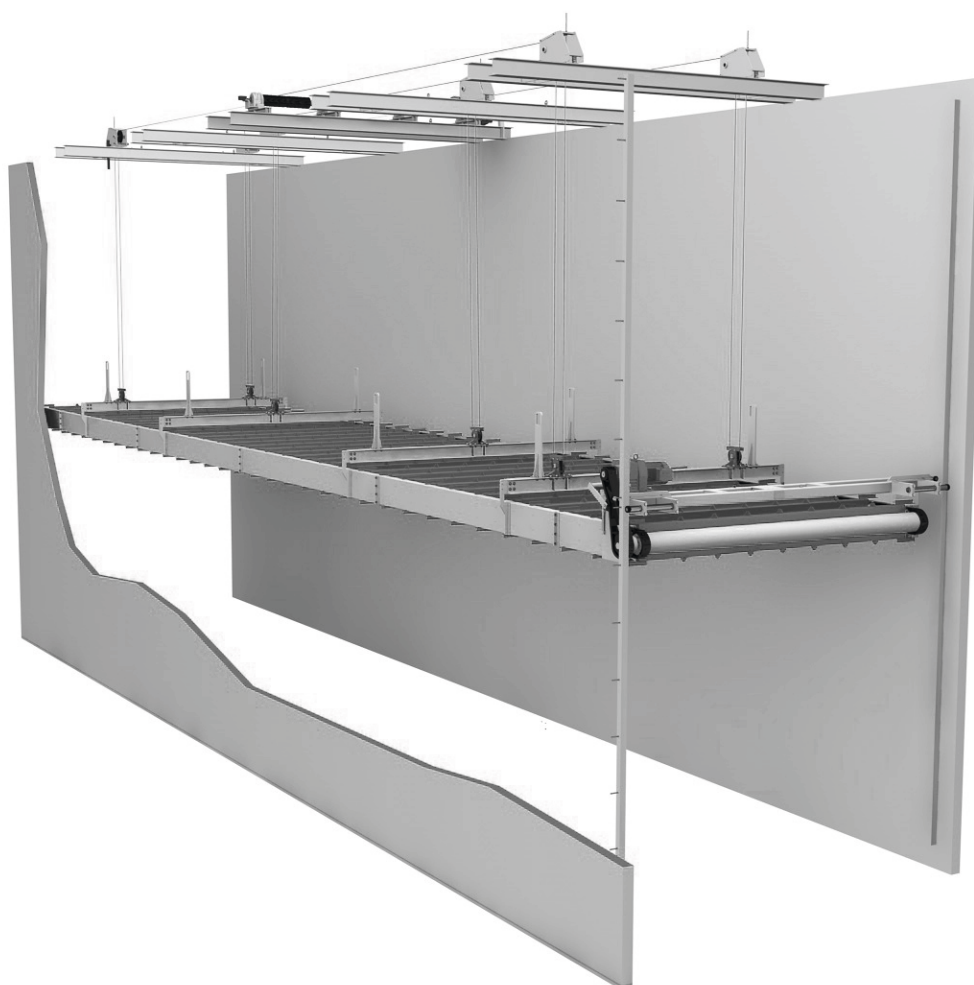




# Technical data

Details		VBE
Dimension (Length)	mm	31,000
Dimension (Width)	mm	4,100, 5,000
Dimension (Height)	mm	13.600
Maximum material size	mm	up to 350
Filling height	mm	12,000
Storage volume	m <sup>3</sup> / box	1,400
Output capacity	m <sup>3</sup> /h/ box	500

The specified values are maximum values. Subject to technical changes without notice. Dated 08/2022



**Vecoplan®**

Vecoplan AG  
Vor der Bitz 10  
56470 Bad Marienberg | Germany  
phone +49 2661 62 67-0  
fax +49 2661 62 67-70  
welcome@vecoplan.com  
www.vecoplan.com