

# VKF

Tireless and variable –  
drag chain conveyor systems for bulk material transport

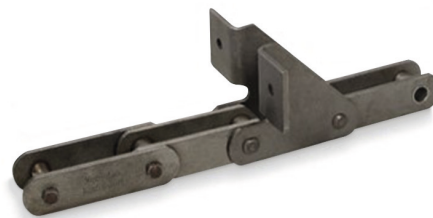


# Flexible conveying

## Individually implementable conveyor lines for your system

Drag chain conveyor systems are highly adaptable in every respect, whether for architectural reasons or specified by your bulk material

An endless chain with feed dogs transports your bulk materials reliably and constantly. The conveyor chains run on low-wear slide rails and are covered throughout the process so that no material can get into the chains. The drag chain conveyors are designed according to your requirements concerning material properties, conveying capacity, operating time, etc.



Gives the conveyor system its name: the drag chain



### Numerous possibilities

- Horizontal or inclined conveyance
- Weather-protected and low-dust conveying thanks to chain running in a closed trough
- Conveying lengths up to 60 m, depending on the type
- Chain thicknesses with breaking force of 11.2 t, 16 t or 22.4 t
- Gentle conveying speed variable between 0.5 and 40 m/min selectable
- Feed dogs and linings in various materials

Details		VKU 300	VKU 400	VKU 500	VKU 600	VKU 700	VKU 800
Motor power	kW	0.55-11	0.75-11	0.75-11	0.75-11	1.1-18.5	1.5-18.5
Conveying capacity	m³/h	19	32	41	50	82	107
Total length	m	60	60	60	60	60	60
Clear width	mm	286	400	500	600	670	800
Max. inclination	°	70	70	70	70	70	70



# VKU – Chain conveyor with lower belt conveying

The Vecoplan chain conveyors offer different possibilities for material transport

Our Vecoplan VKU drag chain conveyor is a modular continuous conveyor for bulk transport. Depending on the design, the material is conveyed by one or two endless conveyor chains with feed dogs on

the trough bottom. The chain is returned above on low-wear and maintenance-free chain guide rails. The compact, closed, self-supporting design ensures low-wear transportation for large spans.

## Advantages at a glance

- Low space requirement, large climbing angles possible
- Closed system, thus operationally safe and low dustm
- Feeding possible at any point. Unloading can be freely selected by mounting motorized or pneumatic ram.
- Energy efficient conveying
- Low maintenance
- Simple, compact and robust design
- High availability
- Quickly replaceable wear parts thanks to a screwed design

	VKU 850	VKU 1000	VKU 1050	VKU 1100	VKU 1250	VKU 1450	VKU 1800
	1.5-30	1.5-18.5	1.5-30	1.5-18.5	1.5-30	1.5-30	4.0-30
	137	132	181	167	225	269	451
	60	60	60	60	60	60	60
	850	970	1,050	1,150	1,250	1,450	1,800
	70	70	70	70	70	70	70

Detailed dimension sheets and load information on request. Subject to technical changes without notice. Dated 08/2022





# VKO – Chain conveyor with upper belt conveying

The Vecoplan VKO chain conveyors with upper belt conveying will transport your bulk materials with no trouble at all, even with excess lengths.

The Vecoplan VKO-2 drag chain conveyor is a modular continuous conveyor for bulk transport, designed especially for bulk materials with large particle sizes or as an evacuation conveyor. The material is transported in the trough bottom by two endless running conveying

chains with feed dogs. The chain is returned below the conveying trough on low-wear and maintenance-free chain guide rails. The compact, self-supporting design ensures low-wear transportation for large spans.

## Advantages at a glance

- This type of drag chain conveyor is particularly suitable as a discharge conveyor, e.g., after discharge silos such as push/pull floors or loading and unloading conveyors.
- Insensitive to overlengths and impurities
- Low space requirement, steep climbing angles possible
- Feeding possible at any point
- Energy-efficient conveying
- Low maintenance requirements
- Simple, compact and robust design
- High availability

Details		VKO 700	VKO 800	VKO 850	VKO 1000	VKO 1050	VKO 1250	VKO 1450
Drive power	kW	1.1-18.5	1.5-18.5	1.5-30	1.5-18.5	1.5-30	1.5-30	1.5-30
Conveying capacity	m³/h	57	75	140	93	186	231	276
Overall length	m	60	60	60	60	60	60	60
Clear width	mm	670	820	850	970	1,050	1,250	1,450
Max. inclination	°	70	70	70	70	70	70	70

Detailed dimension sheets and load information on request. Subject to technical changes without notice. Dated 08/2022





# VKS –

## Chain conveyor with screw

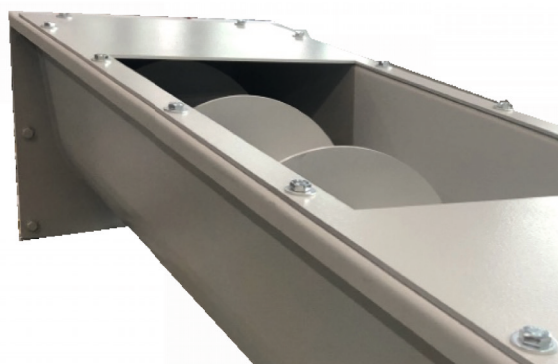
Two proven systems have been combined for optimum removal after the shredding process

The solution for the compact and space-saving removal of bulk materials. Specially developed for the disposal of shredded materials in small spaces or continuous material removal.

The VKS series combines the efficiency of a screw chain conveyor with that of a chain conveyor in a space-saving manner and usually with one drive.

### Advantages at a glance

- Compact system – worm and chain conveyors can be equipped with one drive
- Can be used as a discharge conveyor for a wide variety of storage systems
- Space-saving solution for the disposal of shredded output



Details		VKS 300	VKS 400	VKS 500
Drive power	kW	1.1-2.2	1.1-5.5	1.1-5.5
Conveying capacity	m³/h	3	8	15
Overall length	m	60	60	60
Clear width	mm	286	400	500
Max. inclination	°	70	70	70
Screw diameter	mm	180	250	315

Detailed dimension sheets and load information on request. Subject to technical changes without notice. Dated 08/2022



## Your advantages

Almost any conveying process  
can be realised, thanks to a  
flexible building block principle

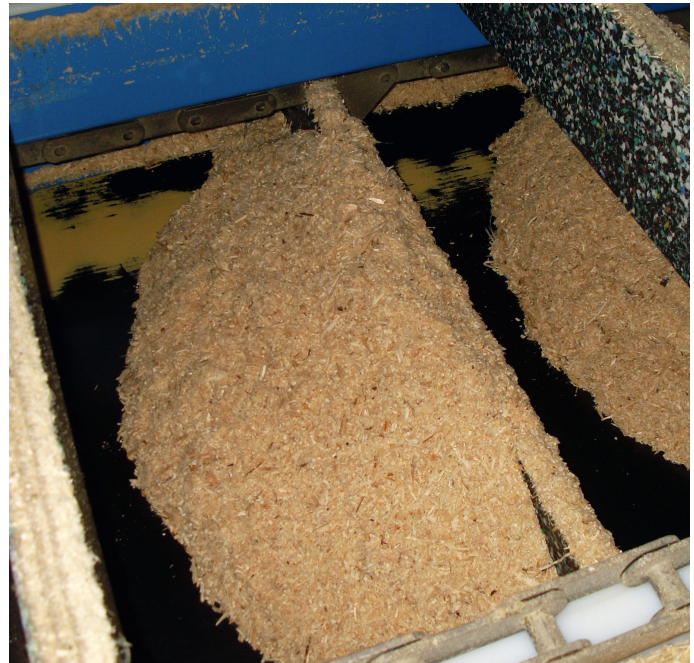
High adaptability to your bulk material

Feeding of silo equipment, open-air storage  
areas, trucks and container vehicles, large  
combustion plants and much more is possible

Operation monitoring, congestion flap and  
galvanised covers as standard



# Moving forward – far or high up in the tightest of spaces



**Vecoplan®**

Vecoplan AG  
Vor der Bitz 10  
56470 Bad Marienberg | Germany  
phone +49 2661 62 67-0  
fax +49 2661 62 67-70  
welcome@vecoplan.com  
www.vecoplan.com